

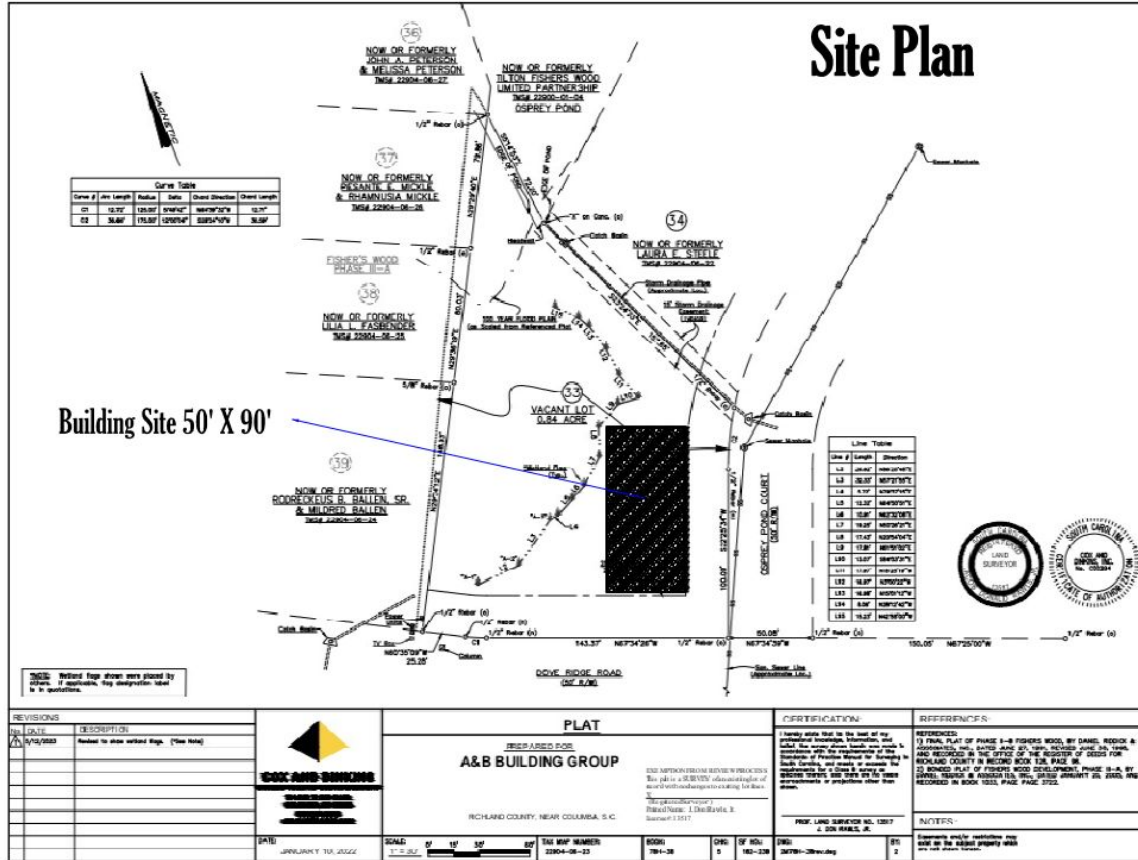
A stone archway with a bird emblem and the text 'FISHERS WOOD' in the background. The archway is made of brick and has a white stone center. The bird emblem is a blue and white illustration of a bird, possibly a heron or egret, standing on a branch. The text 'FISHERS WOOD' is written in a serif font, with 'FISHERS' above 'WOOD'.

**THREE TWISTED OAKS**

**FISHERS WOOD**

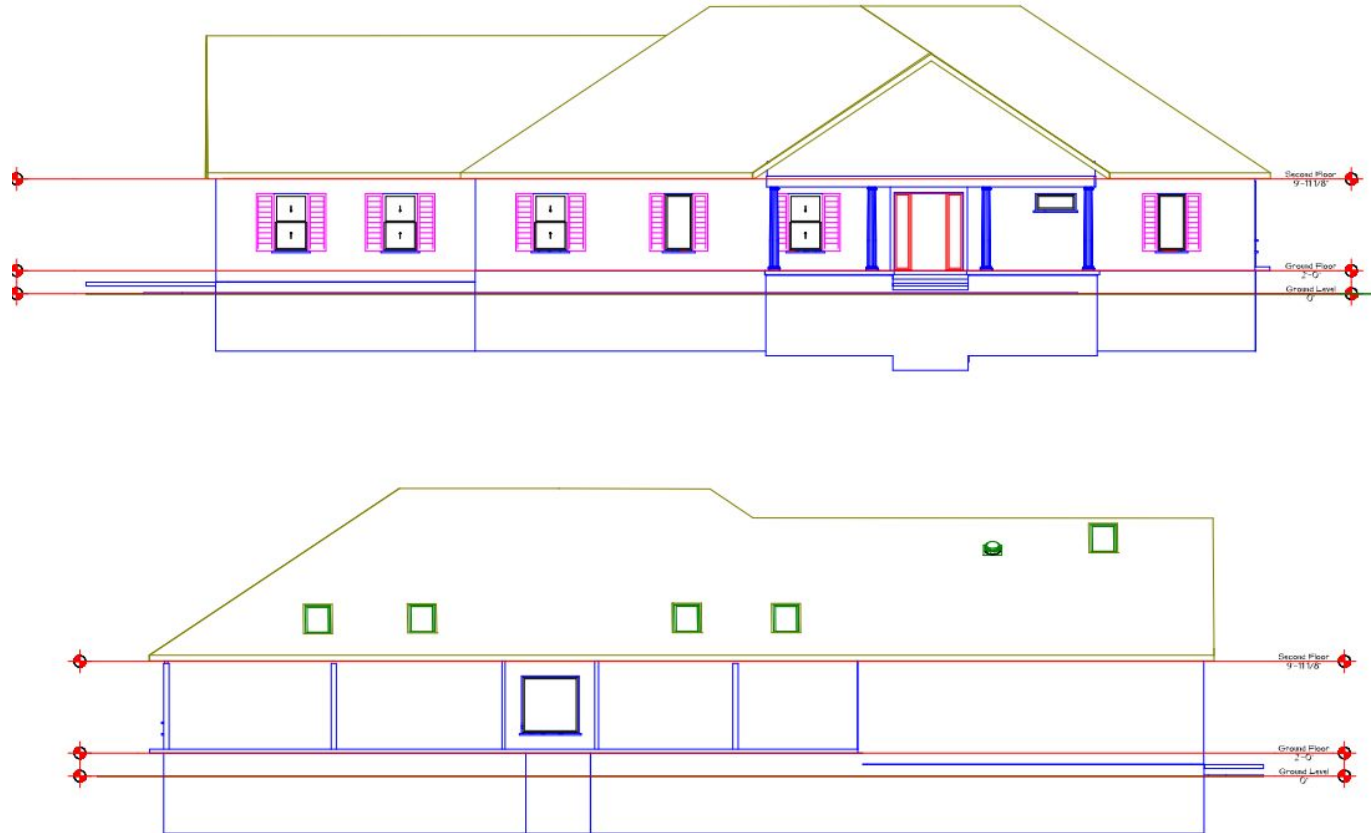
**12 OSPREY POND COURT, COLUMBIA, SC 29223**

# 12 OSPREY POND COURT - SITE PLAN

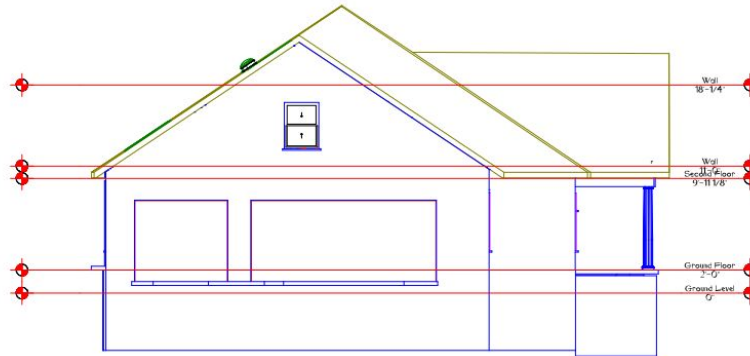
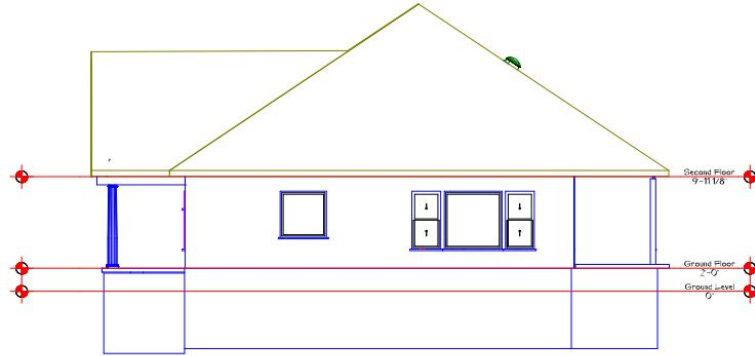




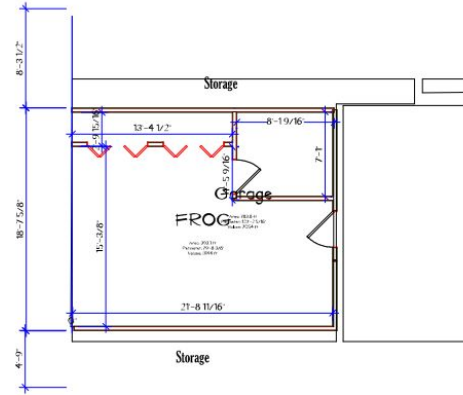
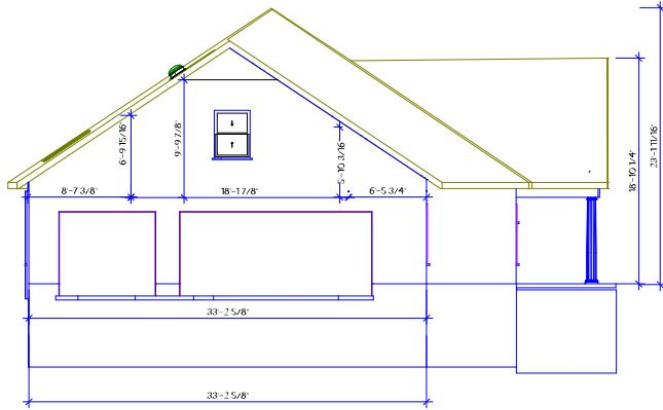
# 12 OSPREY POND COURT - ELEVATIONS (1)



# 12 OSPREY POND COURT - ELEVATIONS (2)



# 12 OSPREY POND COURT - FROG



FROG - 393 Sq Ft



# 12 OSPREY POND COURT - RENDERING



# 12 OSPREY POND COURT - CT VIEWS





# 12 OSPREY POND COURT - SPECIFICATIONS (ROUGH)

Windows	Double Hung with J-Channel - White - Clear - Standard Low-E/Argon - Roll Formed Half Screen - Standard Mesh (Opening Size: 36 W x 60 H , Egress Opening Size: 30.75 W x 24.19 H (5.17 SQ.FT)) - DP35: Size Tested 36" x 74" - U Factor: 0.31, SHGC: 0.27
Doors	3-0 X 7-0 X 1-3/4 Single Door Unit RH ,Double Bore,Inswing,Sm Fiberglass,6 Panel , With Door Sweep,4-9/16 Frame Saver Ext Jambs ,Weather Strip, Mill Adj Sill Satin Nickel 4" Radius Hinges Primed Wood Brick Mould
Exterior	Brick, White
Screen Porch	Cement
Trim	Metal Fascia & Soffit - Light Grey
Shingles Color	Birchwood gaf
Shutters Color	Light Grey
Column Color	Light Grey